

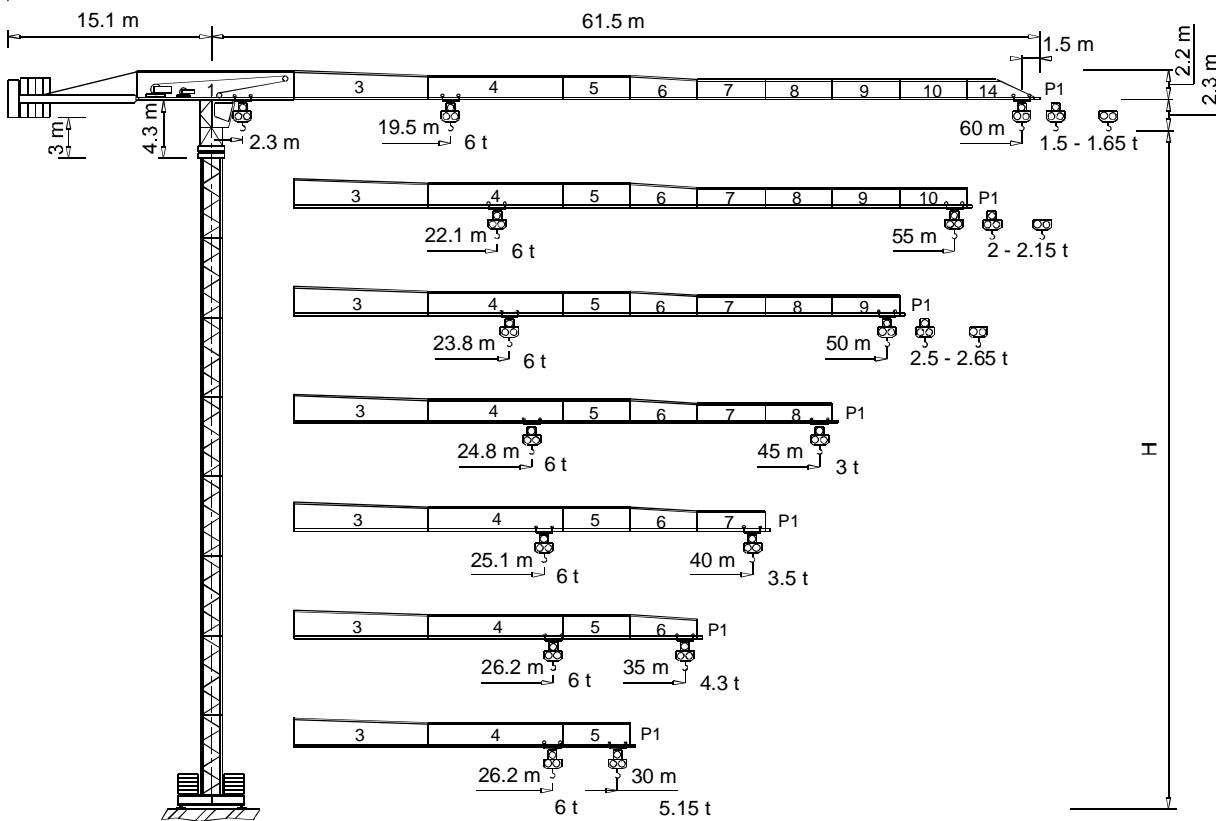


TEREX | COMEDIL

Gru a torre "Flat Top"

"Flat Top" Tower Crane • Grue à tour "Flat Top"

"Flat Top" Turmdrehkran • Grua torre "Flat Top"



CE FEM 1.001 A3

THE ULTIMATE CRANE™

Dati illustrativi non impegnativi
Con riserva di modifica senza preavviso

Specifications and data not binding
Subject to modification without notice

Données techniques seulement indicatives
Modifications réservées sans préavis

Angaben und Beschreibung unverbindlich
Änderungen vorbehalten ohne weitere Mitteilung

Dibujos y datos sin compromiso
Modificaciones reservadas sin preaviso

UTE.DOC. REV.005

"CITY" CTT 141-6 TS



CTT 141-6

Diagramma di portata
Load Diagram

I
GB

Courbes de charges
Lastkurven

F
D

Curvas de cargas

E

		CTT 141-6											
		10	15	20	25	30	35	40	45	50	55	60	
3 t	- 36.8 m	3	3	3	3	3	3	2.72	2.36	2.08	1.84	1.65	
3 t	- 35.2 m	3	3	3	3	3	3	2.56	2.21	1.92	1.69	1.5	
6 t	- 19.51 m	6	6	5.83	4.51	3.64	3.02	2.56	2.21	1.92	1.69	1.5	
3 t	- 41.63 m	3	3	3	3	3	3	3	2.74	2.41	2.15		
3 t	- 39.86 m	3	3	3	3	3	3	2.99	2.58	2.26	2		
6 t	- 22.05 m	6	6	6	5.2	4.21	3.51	2.99	2.58	2.26	2		
3 t	- 45 m	3	3	3	3	3	3	3	3	2.65			
3 t	- 43.13 m	3	3	3	3	3	3	3	2.85	2.5			
6 t	- 23.83 m	6	6	6	5.68	4.61	3.85	3.29	2.85	2.5			
3 t	- 45 m	3	3	3	3	3	3	3	3				
6 t	- 24.85 m	6	6	6	5.96	4.84	4.05	3.46	3				
3 t	- 40 m	3	3	3	3	3	3	3					
6 t	- 25.11 m	6	6	6	6	4.9	4.1	3.5					
3 t	- 35 m	3	3	3	3	3	3						
6 t	- 26.16 m	6	6	6	6	5.14	4.3						
3 t	- 30 m	3	3	3	3	3							
6 t	- 26.23 m	6	6	6	6	5.15							

Altre installazioni
Other configurations

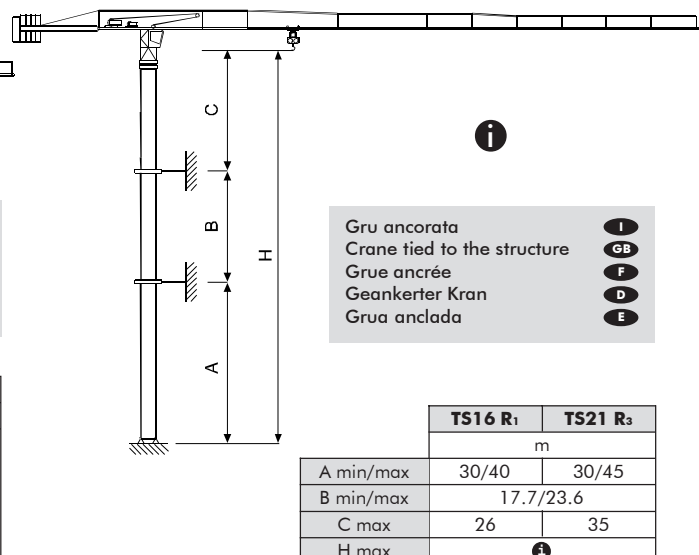
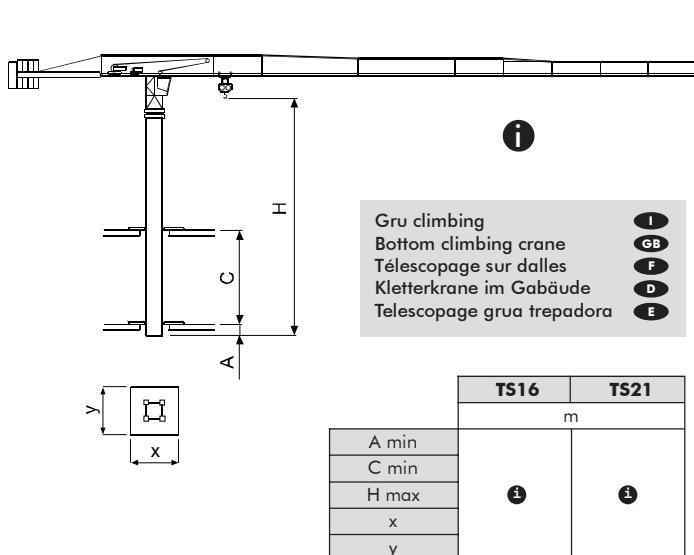
I
GB

Autres implantations
Aufstellmöglichkeiten

F
D

Otras implantaciones

E



I Consultateci

GB

Consult us

D

Nous consulter

F

Auf Anfrage

D

Consultarnos

E



CTT 141-6

Torre **I**

Tower **GB**

Tour **F**

Turm **D**

Mástil **E**

I Le prolunghe TS sono disponibili in lunghezza 11.8 m (solo TS16), 5.9 m, 2.95 m.

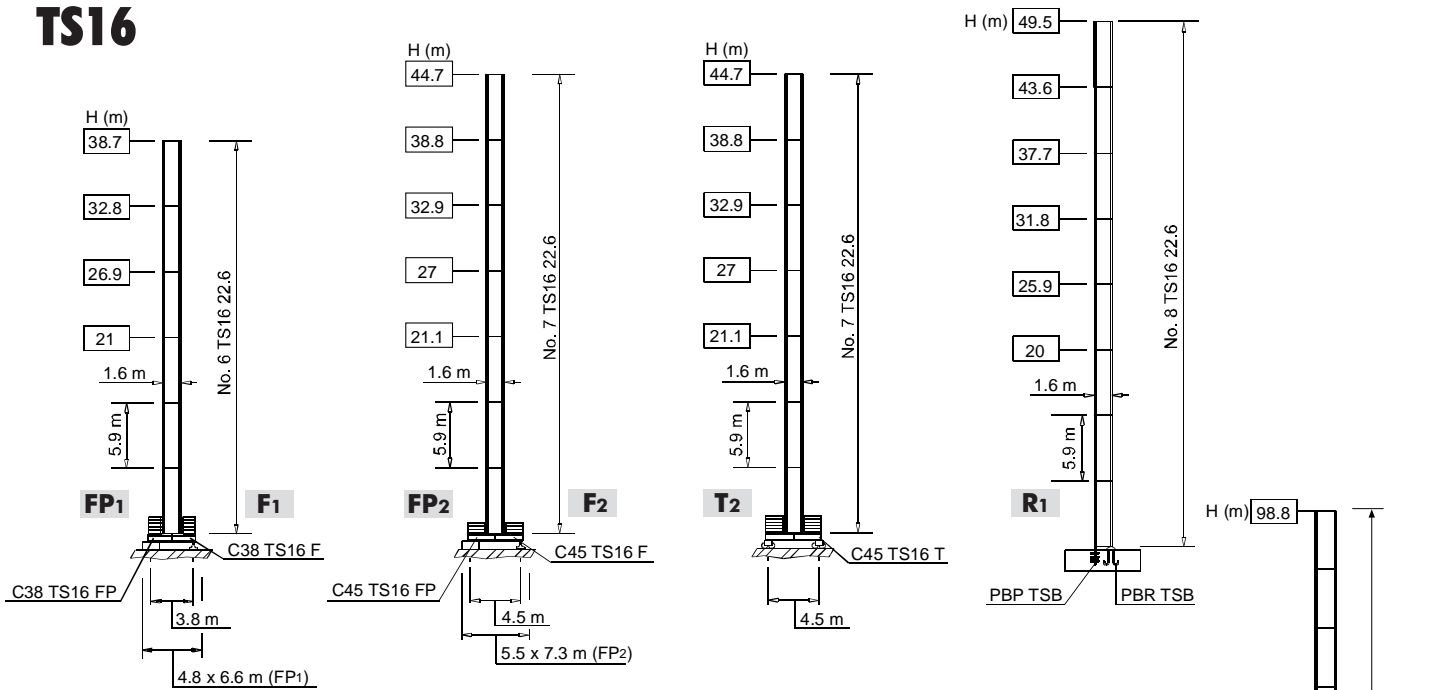
F Les éléments de mât TS sont disponibles en longueur 11.8 m (seulement TS16), 5.9 m, 2.95 m.

E Los tramos de torre TS son disponibles en las medidas de largo 11.8 m (sólo TS16), 5.9 m, 2.95 m.

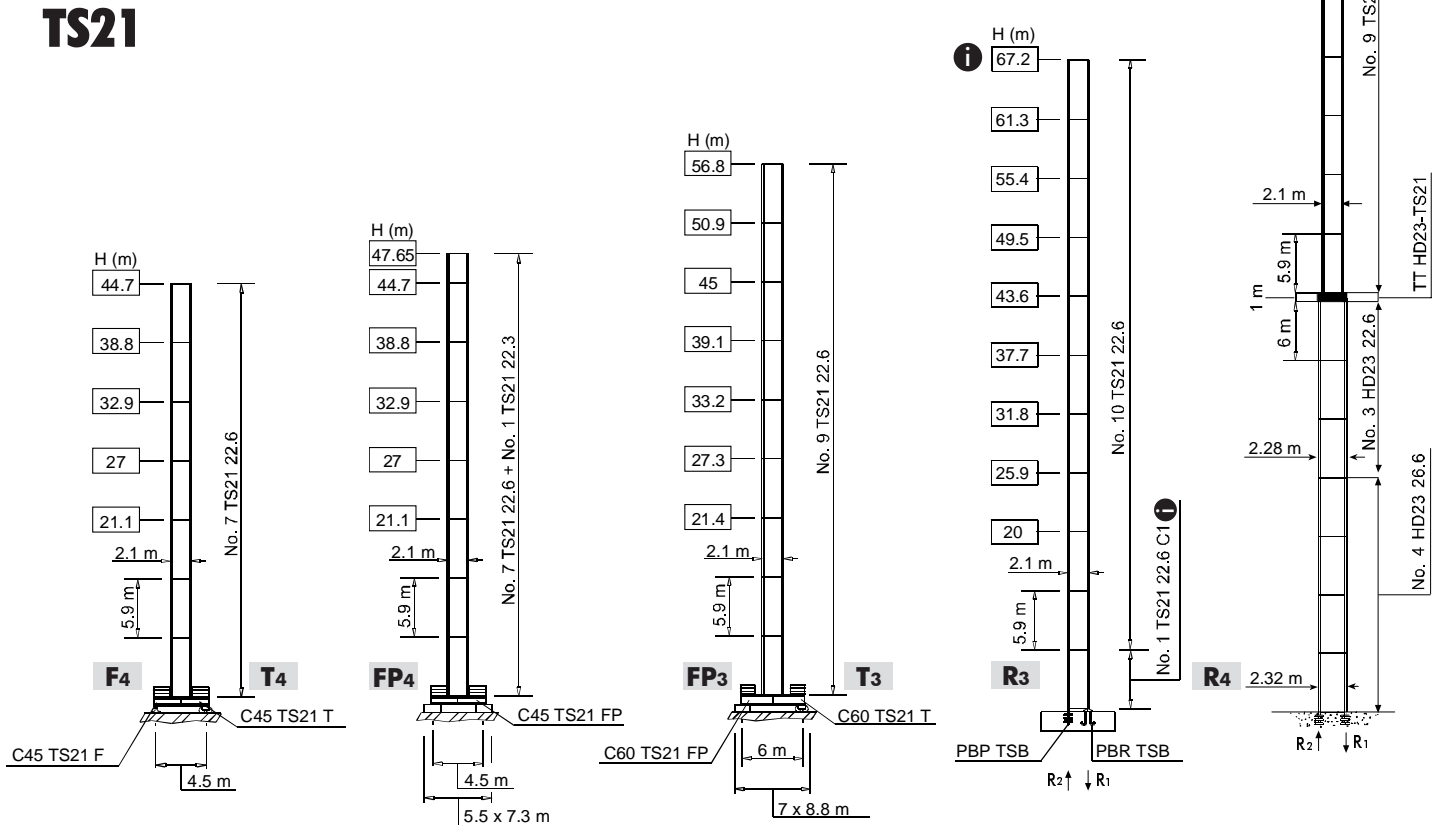
GB The available lengths for the TS tower sections are 11.8 m (only TS16), 5.9 m, 2.95 m.

D Die Turmschüsse TS sind mit Längen 11.8 m (nur TS16), 5.9 m, 2.95 m verfügbar.

TS16



TS21



H Altezza massima sotto gancho

I Max. under hook height

GB Hauteur maxi. sous crochet

F Höchste Hackenhöhe

D Maxima altura bajo gancho

E



CTT 141-6

Meccanismi
Mechanisms



Mécanismes
Antriebe



Mecanismos



	18 APC 30 22 AFC 30	55 * kVA 61 * kVA	400 V - 50 Hz 400 V - 50 Hz / 460 V - 60 Hz
			2000/14/CE

* Gru senza traslazione / Crane without travelling equipment / Grue sans translation / Krane ohne Schienenfahren / Grúa sin traslación

			m/min	t	kW	
	18 APC 30		7	3	18	220 m
			30	3		
			59	1.5		
			3.5	6		
			15	6		
	22 AFC 30 (VARIANT)		29.5	3	22	300 m 380 m (LEBUS)
			0 ⇌ 2.4	3		
			2.4 ⇌ 9	3		
			9 ⇌ 38	3		
			38 ⇌ 61	1.88		
		61 ⇌ 77	1.43			
		0 ⇌ 1.2	6			
		1.2 ⇌ 4.5	6			
		4.5 ⇌ 19	6			
		19 ⇌ 30.5	3.76			
			30.5 ⇌ 38.5	2.86		

	DVF 3 4 (VARIANT)	0 ⇌ 6 ⇌ 32 ⇌ 64 m/min	4 kW
	SSR 2 2 65	0.7 r.p.m. (50 Hz) 0.84 r.p.m. (60 Hz)	2 × 65 Nm
	▲ TAD 2RP 2M4	0 - 24 m/min	2 × 4 kW
	● TAD 2RG 4M3		4 × 3 kW

	Max. H [m]	
T₂-T₄	38.8	> 38.8
T₃	39.1	> 39.1

	Sollevamento		Hoisting		Levage		Heben		Elevación	
	Traslazione carrello		Trolleying		Distribution		Katzfahren		Distribución	
	Rotazione		Slewing		Orientation		Schwenken		Orientación	
	Traslazione		Travelling		Translation		Schienenfahren		Traslación	
	Direttiva sul livello acustico		Directive on noise level		Directive sur le niveau acoustique		Richtlinie für den Schall-Leistungspegel		Directiva sobre el nivel acustico	
	Consultateci		Consult us		Nous consulter		Auf Anfrage		Consultarnos	
	Potenza totale richiesta		Power requirements		Puissance totale nécessaire		Geforderte Stromstärke		Potencia necesaria	
	Alimentazione		Power supply		Alimentation		Stromversorgung		Alimentación	

Gru Comedil s.r.l.

A Terex Company



Divisione Automontanti

Via S. Egidio 42/A, 33074 Fontanafredda (PN) - Italy
Tel. (+39) 0434 567 311 - Telefax (+39) 0434 998631

Internet e-mail: info@comedil.com

Internet home page: www.comedil.com

Via Alessandrina, 25 - 20095 Cusano Milanino (MI) - Italy
Tel. (+39) 02 613 16011 - Telefax (+39) 02 613 16034

Internet e-mail: info.CBR@comedil.com